



**Helio A6**  
 ORDER FORM - USA

**1- Purchasing information**

P.O. number:\* \_\_\_\_\_ Date: \_\_\_\_\_

Company Name:\* \_\_\_\_\_

Purchasing contact:\* \_\_\_\_\_

Phone:\* \_\_\_\_\_

Email:\* \_\_\_\_\_

Contact preference:\* Phone  Email

Marked for: \_\_\_\_\_

**3- Shipping information**

Ship to:\* \_\_\_\_\_

Name: \_\_\_\_\_

Address: \_\_\_\_\_

City: \_\_\_\_\_ State: \_\_\_\_\_

Zip Code: \_\_\_\_\_

Phone: \_\_\_\_\_

**2- ATP/Clinician information**

ATP/Clinician:\* \_\_\_\_\_

Phone:\* \_\_\_\_\_

Email:\* \_\_\_\_\_

Contact preference:\* Phone  Email

\* Required

MA082   
 English Manual USA (STD)

MA089   
 Spanish Manual USA

Taxes not included

MODEL		USD	
WC19	<input type="checkbox"/>	Ultralight folding Helio A6 Wheelchair - 6000 series aluminum (265lb weight capacity)	K0005 \$2 095
WC09	<input type="checkbox"/>	HD Heavy duty kit (350 lb weight capacity)	\$525
SEAT WIDTH <sup>3</sup>			
SW	<input type="checkbox"/>	14" <input type="checkbox"/> 15" <input type="checkbox"/> 16" <input type="checkbox"/> 17" <input type="checkbox"/> 18" <sup>1</sup> <input type="checkbox"/> 19" <sup>1</sup> <input type="checkbox"/>	NC
	<input type="checkbox"/>	20" <sup>1</sup> <input type="checkbox"/> 21" <sup>2</sup> <input type="checkbox"/> 22" <sup>2</sup> <input type="checkbox"/>	E2201 \$495
SEAT DEPTH			
SD	<input type="checkbox"/>	14" <input type="checkbox"/> 15" <input type="checkbox"/> 16" <input type="checkbox"/> 17" <input type="checkbox"/> 18" <input type="checkbox"/> 19" <input type="checkbox"/>	NC
	<input type="checkbox"/>	20" <input type="checkbox"/>	E2203 \$475

1- Available with HD kit

2- Only with HD Kit (350 lb)

[3. Width calculator](#)

**A6 FRONT Seat-to-floor Height - Please select your choice**

Fork/Position		3" caster			4" caster			5" caster			6" caster			7" caster			8" caster				
		Stem bolt Length			Stem bolt length			Stem bolt length			Stem bolt length			Stem bolt length			Stem bolt length				
		STD	+1"	+2"	STD	+1"	+2"	STD	+1"	+2"	STD	+1"	+2"	STD	+1"	+2"	STD	+1"	+2"		
4"	P1	12"	13"	14"	12 1/2"	13 1/2"	14 1/2"														
	P2	12 1/2"	13 1/2"	14 1/2"	13"	14"	15"	13 1/2"	14 1/2"	15 1/2"											
5"	P1																				
	P2				13"	14"	15"	13 1/2"	14 1/2"	15 1/2"											
	P3	13"	14"	15"	13 1/2"	14 1/2"	15 1/2"	14"	15"	16"	14 1/2"	15 1/2"	16 1/2"								
	P4	13 1/2"	14 1/2"	15 1/2"	14"	15"	16"	14 1/2"	15 1/2"	16 1/2"	15"	16"	17"	15 1/2"	16 1/2"	17 1/2"					
7"	P1										15 1/2"	16 1/2"	17 1/2"	16"	17"	18"					
	P2									15 1/2"	16 1/2"	17 1/2"	16"	17"	18"	16 1/2"	17 1/2"	18 1/2"			
	P3									16"	17"	18"	16 1/2"	17 1/2"	18 1/2"	17"	18"	19"	17 1/2"	18 1/2"	19 1/2"
	P4	15 1/2"	16 1/2"	17 1/2"	16"	17"	18"	16 1/2"	17 1/2"	18 1/2"	17"	18"	19"	17 1/2"	18 1/2"	19 1/2"	18"	19"	20"		
	P5	16"	17"	18"	16 1/2"	17 1/2"	18 1/2"	17"	18"	19"	17 1/2"	18 1/2"	19 1/2"	18"	19"	20"	18 1/2"	19 1/2"	20 1/2"		

Height available +/- 1/4" (see stem bolt and fork combination at the end of the order form)

CASTERS						
CA01-03	<input type="checkbox"/>	Composite wheel w/ PU tire	3" x 1"		NC	
CA01-04	<input type="checkbox"/>		4" x 1"		NC	
CA01-05	<input type="checkbox"/>		5" x 1"		NC	
CA01-06	<input type="checkbox"/>		6" x 1"		NC	
CA01-07	<input type="checkbox"/>		7" x 1"		NC	
CA01-08	<input type="checkbox"/>		8" x 1"		NC	
CA10	<input type="checkbox"/>		Pneumatic casters	6" x 1 1/2"	E2214/E2215	\$160
CA11	<input type="checkbox"/>			8" x 1 1/2"	E2214/E2215	\$160
CA14	<input type="checkbox"/>	Newton UltraCaster Composite	4" x 1 1/2"		\$85	
CA15	<input type="checkbox"/>		5" x 1 1/2"		\$85	
CA16	<input type="checkbox"/>		6" x 1 1/2"		\$85	
CA17	<input type="checkbox"/>		4" x 1 1/2"		\$185	
CA18	<input type="checkbox"/>	Newton UltraCaster Aluminum	5" x 1 1/2"		\$195	
CA19	<input type="checkbox"/>		6" x 1 1/2"		\$205	
CASTER OPTIONS						
CA12	<input type="checkbox"/>	Caster Pin Locks (Available with +1" or +2" Stem bolt ONLY) <sup>1</sup>		K0073	\$295	
CA13	<input type="checkbox"/>	Carbon fiber Frog Legs suspension forks (Not available with caster pin locks) <sup>2</sup>		E1015	\$475	

1 - Not available with WC-19; 2- Not available with 7" and 8" casters; limited height of 18.5" with 6" casters

### Helio A6 - REAR Seat-to-floor Height - Please select your choice

20" (451)	22" (501)	24" (540)	25" (559)	26" (590)
12"	13"	13 3/4"	14 1/4"	14 3/4"
12 1/2"	13 1/2"	14 1/4"	14 3/4"	15 1/4"
13"	14"	14 3/4"	15 1/4"	15 3/4"
13 1/2"	14 1/2"	15 1/4"	15 3/4"	16 1/4"
14"	15"	15 3/4"	16 1/4"	16 3/4"
14 1/2"	15 1/2"	16 1/4"	16 3/4"	17 1/4"
15"	16"	16 3/4"	17 1/4"	17 3/4"
15 1/2"	16 1/2"	17 1/4"	17 3/4"	18 1/4"
16"	17"	17 3/4"	18 1/4"	18 3/4"
16 1/2"	17 1/2"	18 1/4"	18 3/4"	19 1/4"
17"	18"	18 3/4"	19 1/4"	19 3/4"
17 1/2"	18 1/2"	19 1/4"	19 3/4"	20 1/4"

Configuration used: 1" seat slope with a center of gravity at 2"

Note: Tire size, center of gravity setting and seat slope may result in a variation of +/- 1/2" of selected seat to floor height"

Footrest					
SWING-IN/SWING-OUT FOOTREST					
FR03-01	<input type="checkbox"/>	60° Swing-in/swing-out footrest - 13.5" - 17"		Set at: *	NC
FR03-02	<input type="checkbox"/>	60° Swing-in/swing-out footrest - 14.5" - 19.5"		Set at: *	NC
FR03-03	<input type="checkbox"/>	60° Swing-in/swing-out footrest - 15.5" - 20.5"		Set at: *	NC
FR04-01	<input type="checkbox"/>	70° Swing-in/swing-out footrest - 13.5" - 17"		Set at: *	NC
FR04-02	<input type="checkbox"/>	70° Swing-in/swing-out footrest - 14.5" - 19.5"		Set at: *	NC
FR04-03	<input type="checkbox"/>	70° Swing-in/swing-out footrest - 15.5" - 20.5"		Set at: *	NC
FR15-01	<input type="checkbox"/>	80° Swing-in/swing-out footrest - 13.5" - 16"		Set at: *	NC
FR15-02	<input type="checkbox"/>	80° Swing-in/swing-out footrest - 14.5" - 19.5"		Set at: *	NC
FR15-03	<input type="checkbox"/>	80° Swing-in/swing-out footrest - 15.5" - 20.5"		Set at: *	NC
FR06	<input type="checkbox"/>	90° swing-in/swing-out with front mount - Standard (no extension) <sup>1</sup>		7.5" - 11"	Set at: *
FR07	<input type="checkbox"/>	90° swing-in/swing-out with front mount - Short extension 2" <sup>1, 2</sup>		9.5" - 13"	Set at: *
FR08	<input type="checkbox"/>	90° swing-in/swing-out with front mount - Medium extension 4" <sup>1, 2</sup>		9.5" - 14.5"	Set at: *
FOOTREST OPTIONS					
FR09	<input type="checkbox"/>	High mount (footplate attached to the hanger with clamps) <sup>3</sup>		5" - 13.5"	Set at: *
FR10	<input type="checkbox"/>	Elevating legrest with calf pad, Length adjustable <sup>4</sup> Left <input type="checkbox"/> Right <input type="checkbox"/>		14" - 22"	Set at: *
FR99	<input type="checkbox"/>	Omit Footrest		E0990	\$240
					NC

1- Available only with two pieces adjustable footplates; 2- May interfere with front casters; 3- Not available with front mount; 4- The elevating legrest replace the footrest side selected; \* +/- 1/2"

FOOTPLATES						
FP01	<input type="checkbox"/>	Standard - Composite <sup>1</sup>				STD
FP02	<input type="checkbox"/>	Newton adjustable angle - Composite			K0040	\$210
FP03	<input type="checkbox"/>	Newton adjustable angle - Aluminum			K0040	\$230
FP06	<input type="checkbox"/>	One piece adjustable angle flip-up - Aluminum			K0040	\$190
FOOTPLATE ACCESSORIES						
FP08	<input type="checkbox"/>	Length adjustable heel loop (not available with one piece footplate)			E0951	\$40
FP09	<input type="checkbox"/>	Calf strap			K0038	\$35
FP30	<input type="checkbox"/>	Bodypoint Aeromesh Padded calf strap			K0038	\$115

1- Not available with front mount

SWING AWAY RESIDUAL LIMB SUPPORT						
FR27	<input type="checkbox"/>	Residual limb support - flat 6"x8"	Left <input type="checkbox"/> Right <input type="checkbox"/>		E1020	\$405
FR28	<input type="checkbox"/>	Residual limb support - flat 8"x10"	Left <input type="checkbox"/> Right <input type="checkbox"/>		E1020	\$405
FR29	<input type="checkbox"/>	Residual limb support - flat 10"x10"	Left <input type="checkbox"/> Right <input type="checkbox"/>		E1020	\$405
FR30	<input type="checkbox"/>	Residual limb support - flat 10"x14"	Left <input type="checkbox"/> Right <input type="checkbox"/>		E1020	\$405
FR32	<input type="checkbox"/>	Residual limb support - contour 6"x8"	Left <input type="checkbox"/> Right <input type="checkbox"/>		E1020	\$405
FR33	<input type="checkbox"/>	Residual limb support - contour 8"x10"	Left <input type="checkbox"/> Right <input type="checkbox"/>		E1020	\$405

### Backrest

FIXED ANGLE BACK CANES WITH INTEGRATED PUSH HANDLE						
BC58-915	<input type="checkbox"/>	Straight aluminum back cane	9" - 15" increment of 1/2"	Set at <sup>2</sup> :		NC
BC58-1521	<input type="checkbox"/>	Straight aluminum back cane	15" - 21" increment of 1/2"	Set at <sup>2</sup> :		NC
BC60	<input type="checkbox"/>	Straight aluminum back cane	21" - 24" increment of 1"	Set at <sup>2</sup> :	New	\$75
BC01-16	<input type="checkbox"/>	8° bend aluminum back cane	16"			NC
BC01-18	<input type="checkbox"/>	8° bend aluminum back cane	18"			NC
BC01-20	<input type="checkbox"/>	8° bend aluminum back cane	20"			NC
BC59	<input type="checkbox"/>	8° bend aluminum back cane	21" - 24" increment of 1"	Set at <sup>2</sup> :	New	\$75

FIXED ANGLE, HEIGHT ADJUSTABLE BACK CANES WITH PUSH HANDLE OPTIONS						
BC11-912	<input type="checkbox"/>	Straight aluminum back cane	9" - 12" increment of 1/2"	Set at <sup>2</sup> :		NC
BC11-1215	<input type="checkbox"/>	Straight aluminum back cane	12" - 15" increment of 1/2"	Set at <sup>2</sup> :		NC
BC11-1518	<input type="checkbox"/>	Straight aluminum back cane	15" - 18" increment of 1/2"	Set at <sup>2</sup> :		NC
BC11-1821	<input type="checkbox"/>	Straight aluminum back cane	18" - 21" increment of 1/2"	Set at <sup>2</sup> :		NC
BC12-1315	<input type="checkbox"/>	8° bend aluminum back cane	13.5" - 15" increment of 1/2"	Set at <sup>2</sup> :		\$55
BC12-1518	<input type="checkbox"/>	8° bend aluminum back cane	15" - 18" increment of 1/2"	Set at <sup>2</sup> :		\$55
BC12-1821	<input type="checkbox"/>	8° bend aluminum back cane	18" - 21" increment of 1/2"	Set at <sup>2</sup> :		\$55

ANGLE AND HEIGHT ADJUSTABLE BACK CANE WITH PUSH HANDLE OPTIONS						
BC13-1518	<input type="checkbox"/>	Straight aluminum back cane	15" - 18" increment of 1/2"	Set at <sup>2</sup> :		\$210
BC13-1821	<input type="checkbox"/>	Straight aluminum back cane	18" - 21" increment of 1/2"	Set at <sup>2</sup> :		\$210
BC14-1518	<input type="checkbox"/>	8° bend aluminum back cane	15" - 18" increment of 1/2"	Set at <sup>2</sup> :		\$265
BC14-1821	<input type="checkbox"/>	8° bend aluminum back cane	18" - 21" increment of 1/2"	Set at <sup>2</sup> :		\$265
		Select back cane angle:	85° <sup>1</sup> <input type="checkbox"/> 90° STD <input type="checkbox"/> 95° <input type="checkbox"/> 100° <input type="checkbox"/> 105° <input type="checkbox"/> 110° <input type="checkbox"/>			

PUSH HANDLE OPTIONS						
PH01	<input type="checkbox"/>	Push handles				STD
PH05	<input type="checkbox"/>	Fold down push handles <sup>3,5</sup>				\$126
PH06-920	<input type="checkbox"/>	Clamp on height adjustable push handles 9"-20" <sup>3,4,5</sup>				\$315
PH06-923	<input type="checkbox"/>	Clamp on height adjustable push handles 9"-23" <sup>3,4,5</sup>				\$315
PH02	<input type="checkbox"/>	Omit push handles				NC

STROLLER HANDLE AND STABILIZER BAR (only available with push handle)						
PH04	<input type="checkbox"/>	Stroller handle (not available with the HD option)			K0108	\$160
PH03	<input type="checkbox"/>	Newton folding stabilizer bar (not available with stroller handle)				\$265

1 - Not compatible with 8 degree bend back cane 2 - If not indicated, default height setting is at the lowest position - measured from seat sling to top of back upholstery; 3 - Not available with HD option  
4 - Not compatible with swing away armrests, 8° bend back canes, 21-24" back canes and amputee axle plates; 5 - Not compatible with stroller handle, stabilizer bar, headrest and attendant lock

BACK UPHOLSTERY						
BH05	<input type="checkbox"/>	Slip-on Nylon back upholstery				STD
BH06	<input type="checkbox"/>	Adjustable tension Nylon back upholstery			E2611	\$300
BH99	<input type="checkbox"/>	Omit Back upholstery				NC
	<input type="checkbox"/>	NXT back Support			See price list	

SEAT CUSHION						
SC01	<input type="checkbox"/>	2" Cushion			E2601	\$165
SC02	<input type="checkbox"/>	3" Cushion			E2601	\$185
SC99	<input type="checkbox"/>	Omit seat cushion				STD
	<input type="checkbox"/>	NXT cushion			See price list	

## Rear wheels

ONE ARM DRIVE <sup>1</sup> <i>Only available with Newton One rear wheels with Aluminum, Plastic coated Handrims</i>				Available	
HR22	<input type="checkbox"/>	One arm drive <sup>2,3</sup> 24" Left <input type="checkbox"/> Right <input type="checkbox"/>			\$1 465
HR98	<input type="checkbox"/>	Omit handrim on opposite side of the One Arm Drive (OAD)			NC
REAR WHEELS				Available	
RW01	<input type="checkbox"/>	Mag <sup>4</sup>	20", 22" 24"		\$55
RW02	<input type="checkbox"/>	Newton One - spoke wheel <sup>5</sup>	20", 22" 24"		NC
RW03	<input type="checkbox"/>	Newton Gravity - ultralight wheel	20", 22", 24", 25", 26"		\$315
RW04	<input type="checkbox"/>	Spinergy Spox <b>Blk STD</b> <input type="checkbox"/> Wht <sup>6</sup> <input type="checkbox"/> Blue <sup>6</sup> <input type="checkbox"/> Red <sup>6</sup> <input type="checkbox"/> Yel <sup>6</sup> <input type="checkbox"/>	22", 24", 25", 26"		\$835
RW05	<input type="checkbox"/>	Spinergy LX <b>Blk STD</b> <input type="checkbox"/> Pur <sup>6</sup> <input type="checkbox"/> Wht <sup>6</sup> <input type="checkbox"/> Blue <sup>6</sup> <input type="checkbox"/> Red <sup>6</sup> <input type="checkbox"/> Yel <sup>6</sup> <input type="checkbox"/> Pink <sup>6</sup> <input type="checkbox"/> Grn <sup>6</sup> <input type="checkbox"/> Org <sup>6</sup> <input type="checkbox"/>	22", 24", 25", 26"		\$1 045
RW07	<input type="checkbox"/>	Spinergy CLX <sup>5</sup> <b>Blk STD</b> <input type="checkbox"/> Pur <sup>6</sup> <input type="checkbox"/> Wht <sup>6</sup> <input type="checkbox"/> Blue <sup>6</sup> <input type="checkbox"/> Red <sup>6</sup> <input type="checkbox"/> Yel <sup>6</sup> <input type="checkbox"/> Pink <sup>6</sup> <input type="checkbox"/> Grn <sup>6</sup> <input type="checkbox"/> Org <sup>6</sup> <input type="checkbox"/>	24", 25"		\$1 555
TIRES				Available	
TI01	<input type="checkbox"/>	Soft Urethane - 1 3/8"	20", 22" 24"	E2218	STD
TI02	<input type="checkbox"/>	Soft Urethane - knobby 1 3/8 "	22", 24", 25", 26"	E2218	\$95
TI04	<input type="checkbox"/>	Soft Urethane - Shox 1"	22", 24", 25", 26"	E2218	\$115
TI05	<input type="checkbox"/>	Pneumatic - 1 3/8"	20", 22", 24", 26"	E2211/E2212	NC
TI08	<input type="checkbox"/>	Pneumatic with Airless insert - 1 3/8" <sup>7</sup>	22", 24", 26"	E2211/E2213	\$80
TI06	<input type="checkbox"/>	Pneumatic HP - 1"	20", 22", 24", 25", 26"	E2211/E2212	\$95
TI07	<input type="checkbox"/>	Pneumatic HP - Puncture resistant, black 1"	24", 25", 26"	E2211/E2212	\$125

1- Offered with handrims on each side of the wheelchair; 2- Only standard handrim position available; 3- Not available with HD option;  
 4- Not compatible with HP tires ; Only available with aluminum or plastic coated handrim in standard position 5 - Not compatible with Shox tires  
 6 - color spokes require an additional 10 days lead-time 7- Only available with Mag, Newton One and Newton Gravity rear wheels

## Handrims

HANDRIM				Available	
HR01	<input type="checkbox"/>	Aluminum anodized	20", 22", 24", 25", 26"		STD
HR61	<input type="checkbox"/>	Aluminum black hard anodized <sup>2</sup>	20", 22", 24", 25"		\$70
HR02	<input type="checkbox"/>	Plastic coated <sup>1</sup>	20", 22", 24", 25", 26"		\$100
HR03	<input type="checkbox"/>	Q-Grip High friction Neoprene coated <sup>1,2</sup>	22", 24", 25", 26"		\$370
HR07	<input type="checkbox"/>	Newton Air Grip <sup>2</sup> Black <input type="checkbox"/>	20", 22", 24", 25", 26"		\$100
HR	<input type="checkbox"/>	Newton Air Grip <sup>2</sup> (08) Sunkissed Orange <input type="checkbox"/> (09) Burgundy <input type="checkbox"/> (10) Sapphire Blue <input type="checkbox"/> (11) Monster Green <input type="checkbox"/> (12) Charcoal <input type="checkbox"/> (13) Fuchsia <input type="checkbox"/> (14) Steel Blue <input type="checkbox"/> (15) Ferrari Red <input type="checkbox"/> (16) Acid Green <input type="checkbox"/> (17) White <input type="checkbox"/> (18) Sky Blue <input type="checkbox"/>	20", 22", 24", 25", 26"		\$250
HR28	<input type="checkbox"/>	Surge <sup>1,2</sup> (1-1/2" Oval handrim w/ Gripton high friction strip) <b>**Limited availability</b>	22", 24", 25", 26"		\$395
HR05	<input type="checkbox"/>	Surge LT <sup>1,2</sup> (1-1/8" Oval handrim w/ Gripton high friction strip) <b>**Limited availability</b>	22", 24", 25", 26"		\$425
HR04	<input type="checkbox"/>	Natural Fit <sup>1,2</sup> <b>**Limited availability</b>	22", 24", 25", 26"		\$325
HR99	<input type="checkbox"/>	Omit handrim			NC

1- Only standard handrim position available 2 - Not available with Mag wheels or OAD

## Handrims option

Assembly position for aluminum and Newton Air Grip handrim				Available	
HR29	<input type="checkbox"/>	Standard Handrim position Full tab			STD
HR30	<input type="checkbox"/>	Narrow Handrim position Short tab 2 positions			\$27
HR31	<input type="checkbox"/>	Super Narrow Handrim Short tab 2 positions STD <input type="checkbox"/> Short tab 1 position <input type="checkbox"/>			\$27
Thumb piece <sup>3</sup> selection for Natural Fit handrims				Available	
HR23	<input type="checkbox"/>	Standard grip <b>**Limited availability</b>			90 \$
HR27	<input type="checkbox"/>	Super grip <b>**Limited availability</b>			145 \$
HR099	<input type="checkbox"/>	Omit thumb piece			NC

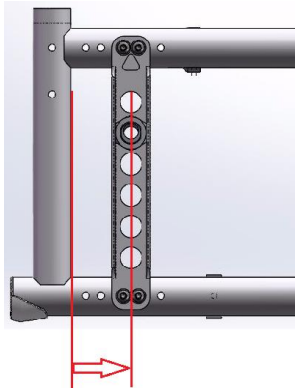
3- Compatible with Surge, Surge LT handrims

AXLE <sup>1</sup>				Available	
AX01	<input type="checkbox"/>	Quick release axle			STD
AX02	<input type="checkbox"/>	Permanent axle			NC
AX03	<input type="checkbox"/>	Quad release axle		K0108	125 \$
AXLE PLATE				Available	
AX04	<input type="checkbox"/>	Amputee adjustable axle plate <sup>2</sup>		E0959	\$195

1- Not required with one arm drive 2 -May interfere with swing away armrest and limit seat to floor height available

REAR WHEEL CAMBER			
CM00	<input type="checkbox"/>	0° camber	STD
CM03	<input type="checkbox"/>	3° camber	NC

### CENTER OF GRAVITY



#### Choose position of rear wheel axle plate:

Measure distance from front of back post to center of axle receiver.

Default setting is at 1" 1/4"

Most stable						Most responsive
AMPUTEE <sup>1</sup>	3/4"	1" 1/4	1" 3/4	2" 1/4	2" 3/4	
<input type="checkbox"/>	<input type="checkbox"/>	<input type="checkbox"/>	<input type="checkbox"/>	<input type="checkbox"/>	<input type="checkbox"/>	

Motion Composites will select the closest possible center of gravity (COG) if an issue arises with the COG  
1- Only available with amputee axle plate

WHEEL LOCK			
WL08	<input type="checkbox"/>	Newton Wheel lock - push to lock	STD
WL02	<input type="checkbox"/>	Pull to lock	NC
WL04	<input type="checkbox"/>	Newton grade aid push to lock (suggested with pneumatic or high pressure tire)	E0974 \$150
WL13	<input type="checkbox"/>	6" removable extension handle	E0961 \$75
WL14	<input type="checkbox"/>		
WL05	<input type="checkbox"/>	Scissors Lock	\$150
WL06	<input type="checkbox"/>	Attendant Lock (additional set of wheel lock mounted to the back)	\$210
WL15	<input type="checkbox"/>	Unilateral wheel lock - pull to lock <sup>1</sup>	Left <input type="checkbox"/> Right <input type="checkbox"/> New \$325
WL99	<input type="checkbox"/>	Omit wheel locks	NC

1- Only available with: seat depths of ≥ 16"; rear wheels of 20", 22" and 24"; Not available with the following combinations: T or U armrests with One Arm Drive or >0° camber; May interfere with some COG and other configurations. For more details, refer to the table at page 7 and the "How-to documents" page of our website:  
[https://www.motioncomposites.com/en\\_us/support-and-education/how-to-documents](https://www.motioncomposites.com/en_us/support-and-education/how-to-documents)

### Armrests

HEIGHT ADJUSTABLE FLIP BACK ARMREST (Convertible to "T" armrest) (improved) <sup>1,3</sup>			
AR01-812	<input type="checkbox"/>	10" Desk length armpad 8" - 12"	Locked <input type="checkbox"/> Unlocked STD <input type="checkbox"/> E0973 \$350
AR01-1014	<input type="checkbox"/>	10" Desk length armpad 10" - 14"	Locked <input type="checkbox"/> Unlocked STD <input type="checkbox"/> E0973 \$350
AR02-812	<input type="checkbox"/>	14" Full length armpad 8" - 12"	Locked <input type="checkbox"/> Unlocked STD <input type="checkbox"/> E0973 \$350
AR02-1014	<input type="checkbox"/>	14" Full length armpad 10" - 14"	Locked <input type="checkbox"/> Unlocked STD <input type="checkbox"/> E0973 \$350

HEIGHT ADJUSTABLE "T" ARMREST (improved) <sup>1</sup>			
AR13-610	<input type="checkbox"/>	10" Desk length armpad <sup>5</sup> 6" - 10"	New E0973 \$325
AR13-812	<input type="checkbox"/>	10" Desk length armpad 8" - 12"	E0973 \$325
AR13-1014	<input type="checkbox"/>	10" Desk length armpad 10" - 14"	E0973 \$325
AR14-610	<input type="checkbox"/>	14" Full length armpad <sup>5</sup> 6" - 10"	New E0973 \$325
AR14-812	<input type="checkbox"/>	14" Full length armpad 8" - 12"	E0973 \$325
AR14-1014	<input type="checkbox"/>	14" Full length armpad 10" - 14"	E0973 \$325

SWING AWAY ARMREST <sup>2,3</sup>			
AR05	<input type="checkbox"/>	Tubular armrest <b>without</b> plastic side guards	8" - 11" E0973 \$225
AR19	<input type="checkbox"/>	Tubular armrest <b>with</b> plastic side guards	8" - 11" E0973 \$385
AR06	<input type="checkbox"/>	10" Desk length flat armpad <b>without</b> plastic side guards	8" - 11" E0973 \$225
AR20	<input type="checkbox"/>	10" Desk length flat armpad <b>with</b> plastic side guards	8" - 11" E0973 \$385
AR17	<input type="checkbox"/>	14" Full length flat armpad <b>without</b> plastic side guards	8" - 11" New E0973 \$225
AR21	<input type="checkbox"/>	14" Full length flat armpad <b>with</b> plastic side guards	8" - 11" E0973 \$385

ARMREST OPTION			
AR12	<input type="checkbox"/>	14" Full Length armpad - Gel Ovation (pair) <sup>3</sup>	\$160
AR99	<input type="checkbox"/>	Omit armrest	NC

1- May have 1/2" restriction on both limits of the range; 2- Could interfere with some rigid backrests; 3- Not compatible with attendant lock; 4- Not available with swing away and flip back armrests  
5- May have some restriction with seat-to-floor height and rear wheel

SIDE GUARDS (not available with Flip Back and "T" Armrest)			
SG01	<input type="checkbox"/>	Plastic side guards (removable)	K0108 \$195
SG02	<input type="checkbox"/>	Carbon fiber side guards (fixed)	\$265
SG03	<input type="checkbox"/>	Carbon fiber side guards (removable)	K0108 \$290
SG06	<input type="checkbox"/>	Plastic fender side guards (removable)	\$285
SG04	<input type="checkbox"/>	Carbon fiber fender side guards (removable)	K0108 \$540
SG99	<input type="checkbox"/>	Omit side guard	NC
SIDE GUARDS OPTION			
SG07	<input type="checkbox"/>	Side guards clip (pair) <sup>1</sup>	NC

1- Not available with fixed carbon fiber side guard

POSITIONING BELT					
SB01-S	<input type="checkbox"/>	Velcro adjustable - <b>Standard 35"</b>		E0978	\$45
SB01-L	<input type="checkbox"/>	Velcro adjustable - <b>Long 60"</b>		E0978	\$45
SB02-S	<input type="checkbox"/>	Auto buckle - <b>Standard 35"</b>	<i>Improved</i>	E0978	\$85
SB02-L	<input type="checkbox"/>	Auto buckle - <b>Long 60"</b>	<i>Improved</i>	E0978	\$85
SB07	<input type="checkbox"/>	Hardware attachment for 2 point seatbelt (1 pair)			NC
SB03	<input type="checkbox"/>	Additional hardware for 2 extra attachment points (needed for the 4 point seat belt) (1 pair)			\$16
SB04-M	<input type="checkbox"/>	BodyPoint Hip Belt - 2 point not padded - <b>Medium 56"</b>		E0978	\$80
SB04-L	<input type="checkbox"/>	BodyPoint Hip Belt - 2 point not padded - <b>Long 61"</b>		E0978	\$80
SB05-S	<input type="checkbox"/>	BodyPoint Hip Belt - 2 point padded - <b>Small 51"</b>		E0978	\$170
SB05-M	<input type="checkbox"/>	BodyPoint Hip Belt - 2 point padded - <b>Medium 56"</b>		E0978	\$170
SB05-L	<input type="checkbox"/>	BodyPoint Hip Belt - 2 point padded - <b>Long 61"</b>		E0978	\$170
SB06-S	<input type="checkbox"/>	BodyPoint Hip Belt - 4 point padded - <b>Small 51"</b>		E0978	\$190
SB06-M	<input type="checkbox"/>	BodyPoint Hip Belt - 4 point padded - <b>Medium 56"</b>		E0978	\$190
SB06-L	<input type="checkbox"/>	BodyPoint Hip Belt - 4 point padded - <b>Long 61"</b>		E0978	\$190
SB08-M	<input type="checkbox"/>	BodyPoint EVOFLEX® Positioning Belt Rehab latch and Band Clamps - <b>Medium 18"</b>		K0108	\$300
SB08-L	<input type="checkbox"/>	BodyPoint EVOFLEX® Positioning Belt Rehab latch and Band Clamps - <b>Long 24"</b>		K0108	\$300
SB99	<input type="checkbox"/>	Omit positioning belt			STD

HEADREST					
AC01-S	<input type="checkbox"/>	Profiled Headrest - <b>Small (3.5"X6")</b>		E0955	\$180
AC01-M	<input type="checkbox"/>	Profiled Headrest - <b>Medium (4.5"X7")</b>		E0955	\$180
AC01-L	<input type="checkbox"/>	Profiled Headrest - <b>Large (5.5"X8")</b>		E0955	\$180
AC28	<input type="checkbox"/>	Headrest mounting hardware with removable non folding stabilizer bar <sup>1</sup>		E1028	\$295

<sup>1</sup> - Only available with push handles - Not available with a stroller handle or a folding stabilizer bar

ACCESSORIES					
AC03	<input type="checkbox"/>	Anti-tippers		E0971	\$140
AC29	<input type="checkbox"/>	Swing-away anti-tipper <sup>1</sup> Left <input type="checkbox"/> Right <input type="checkbox"/>			\$160
AC27	<input type="checkbox"/>	Tip assist <sup>2</sup>			\$65
AC04	<input type="checkbox"/>	Transit Tie Down ( <i>Unoccupied</i> )			NC
AC05-S	<input type="checkbox"/>	WC-19 Transit Tie Down w/Q'straint belt <sup>3</sup> Short belt 20"-41"			\$355
AC05-L	<input type="checkbox"/>	WC-19 Transit Tie Down w/Q'straint belt <sup>3</sup> Long belt 20"-46"			\$355
AC35	<input type="checkbox"/>	WC-19 Transit Tie Down without belt <sup>3</sup>	<i>New</i>		\$325
AC06	<input type="checkbox"/>	Cane and crutch holder      Left <input type="checkbox"/> Right <input type="checkbox"/>		E2207	\$195
AC07	<input type="checkbox"/>	Oxygen tank holder - D and E Type <i>Not compatible with swing away armrest or amputee axle plate</i> Left		E2208	\$310
AC08	<input type="checkbox"/>	Spoke guards <sup>4</sup> Available: 20", 22", 24", 26"		K0065	\$115
AC09	<input type="checkbox"/>	Footrest neoprene impact guard ( <i>pair</i> ) - Black		K0108	\$90
AC10	<input type="checkbox"/>	Seat pouch			\$80
AC30	<input type="checkbox"/>	Newton multi-purpose pouch			\$60
AC26	<input type="checkbox"/>	BodyPoint Mobility Bag			\$130
AC23	<input type="checkbox"/>	Newton Backpack			\$125
AC12	<input type="checkbox"/>	Velcro Closing Strap			\$55
AC13	<input type="checkbox"/>	Tool kit			\$50
AC16	<input type="checkbox"/>	Motion Composites Polo Shirt      W/S <input type="checkbox"/> W/M <input type="checkbox"/> W/L <input type="checkbox"/> M/S <input type="checkbox"/> M/M <input type="checkbox"/> M/L <input type="checkbox"/> M/XL <input type="checkbox"/> M/XXL <input type="checkbox"/> M/XXXL <input type="checkbox"/> M/XXXXL <input type="checkbox"/>			\$35
AC15	<input type="checkbox"/>	Military Patches      Army <input type="checkbox"/> Navy <input type="checkbox"/> Air Force <input type="checkbox"/> Marines <input type="checkbox"/> Coast Guard <input type="checkbox"/> Combat Wounded Purple Heart <input type="checkbox"/>			\$95

<sup>1</sup> - Must select the pair (left and right) with HD option; Only available with rear seat to floor height between 13 1/2" and 19 3/4"

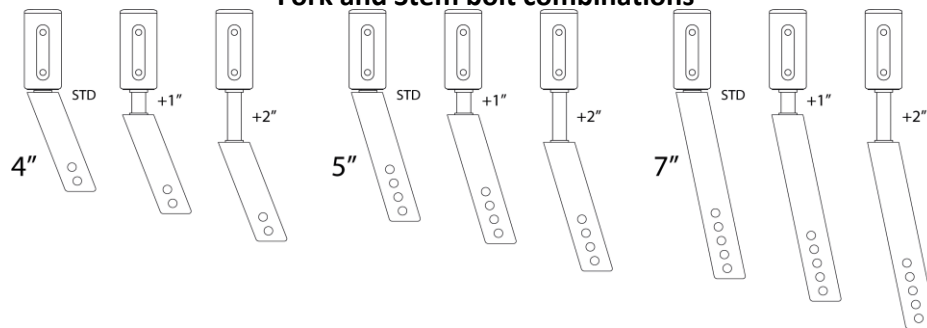
<sup>2</sup> - Cannot be combined with Anti Tipppers

<sup>3</sup> - May interfere with swing away armrest and Clamp on height adjustable push handle; Not available with HD option

<sup>4</sup> - Not available with Mag wheels and Spinergy

FRAME COLOR (with black hydroformed aluminum crossbrace)					
FC01	<input type="checkbox"/>	Black			NC
FC	<input type="checkbox"/>	(03) Sunkissed Orange <input type="checkbox"/> (04) Burgundy <input type="checkbox"/> (05) Sapphire Blue <input type="checkbox"/> (06) Monster Green <input type="checkbox"/> (07) Charcoal <input type="checkbox"/> (08) Fuchsia <input type="checkbox"/> (09) Steel Blue <input type="checkbox"/> (17) Ferrari Red <input type="checkbox"/> (18) Acid Green <input type="checkbox"/>			NC
FC99	<input type="checkbox"/>	Custom Color <u>Specify PPG Paintit color:</u>	<i>additional 10 days lead-time</i>		\$380

### Fork and Stem bolt combinations



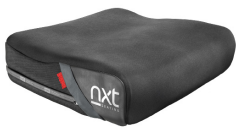
### Unilateral wheel lock restrictions

Seat depth must be 16in and greater		
Rear wheel diameter 24 in and less		
"T" or flip-back armrest only available with 0° Camber		
One arm drive: Not compatible with "T" or flip-back armrest		
"T" or flip-back armrest may require to move the rear wheels outwards		
Wheel lock lever extension not available		
Rear wheel diameter	Seat depth (in)	COG Compatibility Range (in)
20 in	16+	1.25 to 2.75
22 in	16	0.75 to 2.25
	17+	0.75 to 2.75
24 in	16	0.75 to 1.75
	17	0.75 to 2.25
	18+	0.75 to 2.75

Notes :

BioFit™ CUSHION	WIDTH											
	12"	13"	14"	15"	16"	17"	18"	19"	20"	21"	22"	
DEPTH	12"	<input type="checkbox"/> \$425	<input type="checkbox"/> \$425	<input type="checkbox"/> \$425								
	14"	<input type="checkbox"/> \$425	<input type="checkbox"/> \$425	<input type="checkbox"/> \$425								
	15"		<input type="checkbox"/> \$425	<input type="checkbox"/> \$425	<input type="checkbox"/> \$425	<input type="checkbox"/> \$425						
	16"		<input type="checkbox"/> \$425	<input type="checkbox"/> \$425	<input type="checkbox"/> \$425	<input type="checkbox"/> \$425	<input type="checkbox"/> \$425	<input type="checkbox"/> \$455	<input type="checkbox"/> \$455	<input type="checkbox"/> \$455	<input type="checkbox"/> \$455	<input type="checkbox"/> \$455
	17"				<input type="checkbox"/> \$425	<input type="checkbox"/> \$425	<input type="checkbox"/> \$425	<input type="checkbox"/> \$425	<input type="checkbox"/> \$455	<input type="checkbox"/> \$455		
	18"				<input type="checkbox"/> \$425	<input type="checkbox"/> \$425	<input type="checkbox"/> \$425	<input type="checkbox"/> \$425	<input type="checkbox"/> \$455	<input type="checkbox"/> \$455	<input type="checkbox"/> \$455	<input type="checkbox"/> \$455
	19"				<input type="checkbox"/> \$425	<input type="checkbox"/> \$425	<input type="checkbox"/> \$425	<input type="checkbox"/> \$425	<input type="checkbox"/> \$455	<input type="checkbox"/> \$455		
	20"				<input type="checkbox"/> \$425	<input type="checkbox"/> \$425	<input type="checkbox"/> \$425	<input type="checkbox"/> \$455	<input type="checkbox"/> \$455	<input type="checkbox"/> \$455	<input type="checkbox"/> \$455	<input type="checkbox"/> \$455

Optional Incontinent / Infection Control Outer Cover NXCAF \_ \_ \_ \_ V  N/C



NXCABF \_ \_ \_ \_  
(W" x D")

HCPCS CODE: E2607-E2608

**Optima™ THORACIC BACK SUPPORT**

THORACIC SHAPE	Optima™	Fits Width	Height	✓	\$
	NOACB1613	16"-18"	13"	<input type="checkbox"/>	\$660
	NOACB1616	16"-18"	16"	<input type="checkbox"/>	\$660
	NOACB1619	16"-18"	19"	<input type="checkbox"/>	\$660
	NOACB1813	18"-20"	13"	<input type="checkbox"/>	\$660
	NOACB1816	18"-20"	16"	<input type="checkbox"/>	\$660
	NOACB1819	18"-20"	19"	<input type="checkbox"/>	\$660
	NOACB2016	20"-22"	16"	<input type="checkbox"/>	\$660
	NOACB2019	20"-22"	19"	<input type="checkbox"/>	\$660
	NOACB2213	22"-24"	13"	<input type="checkbox"/>	\$710
	NOACB2216	22"--24"	16"	<input type="checkbox"/>	\$710
	NOACB2219	22"-24"	19"	<input type="checkbox"/>	\$710

HCPCS CODE: E2620-E2621

**Optima™ DEEP THORACIC BACK SUPPORT**

Optima™ DEEP	Fits Width	Height	✓	\$
NOPCB1616	16"-18"	16"	<input type="checkbox"/>	\$660
NOPCB1619	16"-18"	19"	<input type="checkbox"/>	\$660
NOPCB1816	18"-20"	16"	<input type="checkbox"/>	\$660
NOPCB1819	18"-20"	19"	<input type="checkbox"/>	\$660
NOPCB2016	20"-22"	16"	<input type="checkbox"/>	\$660
NOPCB2019	20"-22"	19"	<input type="checkbox"/>	\$660
NOPCB2213	22"-24"	13"	<input type="checkbox"/>	\$710
NOPCB2216	22"-24"	16"	<input type="checkbox"/>	\$710
NOPCB2219	22"-24"	19"	<input type="checkbox"/>	\$710

HCPCS CODE: E2620-E2621



**Xtend™ HEIGHT ADJUSTABLE THORACIC BACK SUPPORT**

Xtend™	Fits Width	Height	✓	\$
NHAACB1616/20	16"-18"	16"-20"	<input type="checkbox"/>	\$660
NHAACB1816/20	18"-20"	16"-20"	<input type="checkbox"/>	\$660
NHAACB2016/20	20"-22"	16"-20"	<input type="checkbox"/>	\$660
NHAACB2216/20	22"-24"	16"-20"	<input type="checkbox"/>	\$710

HCPCS CODE: E2620-E2621

**Xtend™ DEEP HEIGHT ADJUSTABLE THORACIC BACK SUPPORT**

Xtend™ DEEP	Fits Width	Height	✓	\$
NHAPCB1616/20	16"-18"	16"-20"	<input type="checkbox"/>	\$660
NHAPCB1816/20	18"-20"	16"-20"	<input type="checkbox"/>	\$660
NHAPCB2016/20	20"-22"	16"-20"	<input type="checkbox"/>	\$660
NHAPCB2216/20	22"-24"	16"-20"	<input type="checkbox"/>	\$710

HCPCS CODE: E2620-E2621

**Classic™ PELVIC BACK SUPPORT**

Classic™	Fits Width	Height	✓	\$
NACB1616	16"-18"	16"	<input type="checkbox"/>	\$660
NACB1618	16"-18"	18"	<input type="checkbox"/>	\$660
NACB1816	18"-20"	16"	<input type="checkbox"/>	\$660
NACB1818	18"-20"	18"	<input type="checkbox"/>	\$660
NACB1820	18"-20"	20"	<input type="checkbox"/>	\$660
NACB2020	20"-22"	20"	<input type="checkbox"/>	\$660
NACB2216	22"-24"	16"	<input type="checkbox"/>	\$710
NACB2218	22"-24"	18"	<input type="checkbox"/>	\$710
NACB2220	22"-24"	20"	<input type="checkbox"/>	\$710

HCPCS CODE: E2620-E2621

**Classic™ DEEP PELVIC BACK SUPPORT**

Classic DEEP™	Fits Width	Height	✓	\$
NPCB1616	16"-18"	16"	<input type="checkbox"/>	\$660
NPCB1618	16"-18"	18"	<input type="checkbox"/>	\$660
NPCB1818	18"-20"	18"	<input type="checkbox"/>	\$660
NPCB1820	18"-20"	20"	<input type="checkbox"/>	\$660
NPCB2020	20"-22"	20"	<input type="checkbox"/>	\$660
NPCB2216	22"-24"	16"	<input type="checkbox"/>	\$710
NPCB2218	22"-24"	18"	<input type="checkbox"/>	\$710
NPCB2220	22"-24"	20"	<input type="checkbox"/>	\$710

HCPCS CODE: E2620-E2621



**MultiFit™ HEAD SUPPORT - MULTI-ADJUSTABLE PADS**

	HCPCS CODE: E0955
Model #NIB-0784	✓ \$
10" x 5" Large Rectangular	<input type="checkbox"/> \$195

	HCPCS CODE: E0955
Model # NIB-0818	✓ \$
14" x 5" Extra-Large Rectangular	<input type="checkbox"/> \$195

**MultiFit™ HEAD SUPPORT - FIXTURES**

	Model #NIB-0747	✓ \$
Multi-Axis Hardware	<input type="checkbox"/> \$145	

	Model # NIB-0823	✓ \$
Head Support Receiver Bracket	<input type="checkbox"/> \$55	

ALL PRICES QUOTED IN USD. PRICES ARE SUBJECT TO CHANGE WITHOUT NOTICE.